

Attach VELCRO® Brand sew on fastener here

## ARM SLEEVE

cut 2, blue fleece

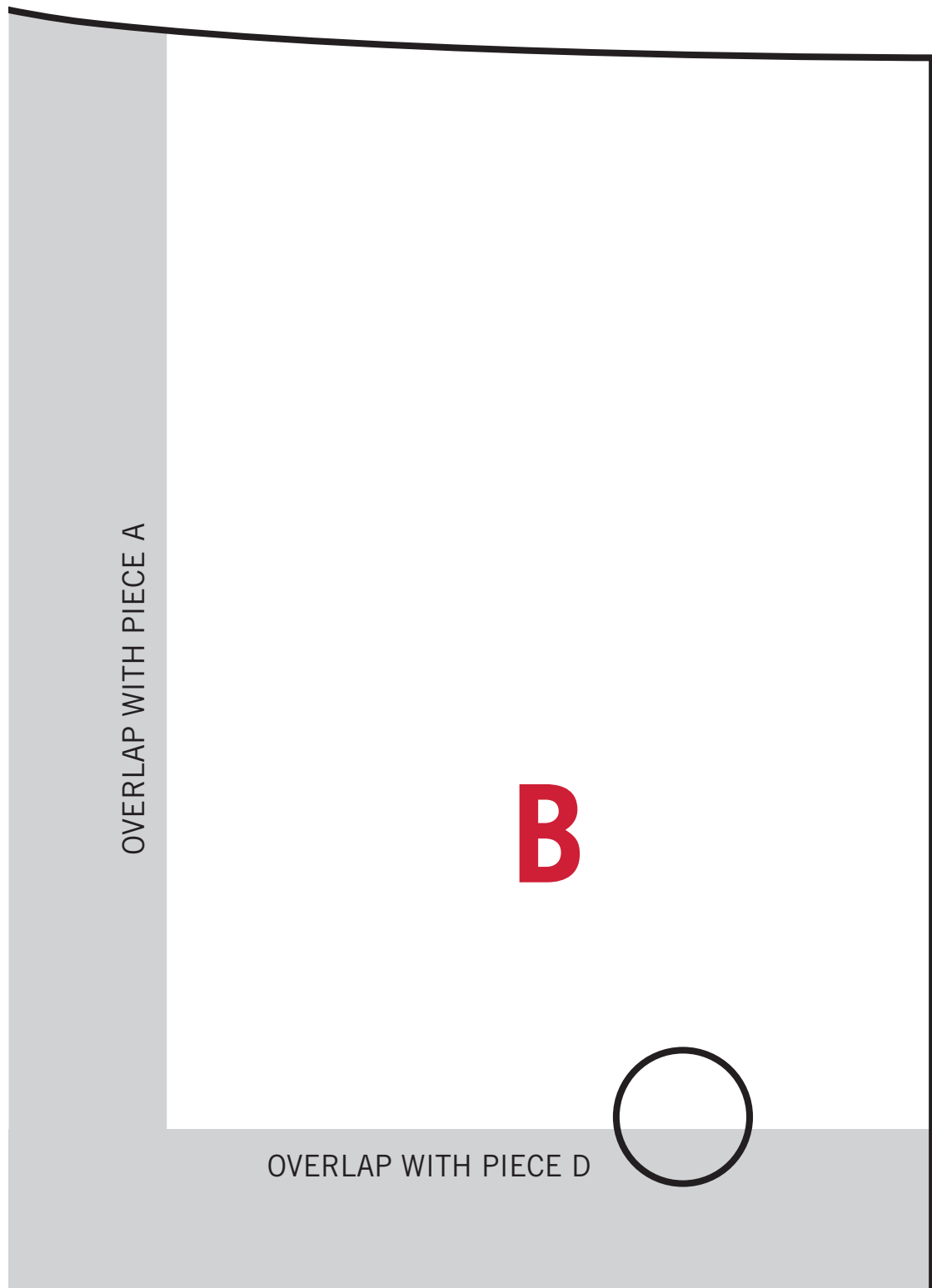
**A**

OVERLAP WITH PIECE B

OVERLAP WITH PIECE C

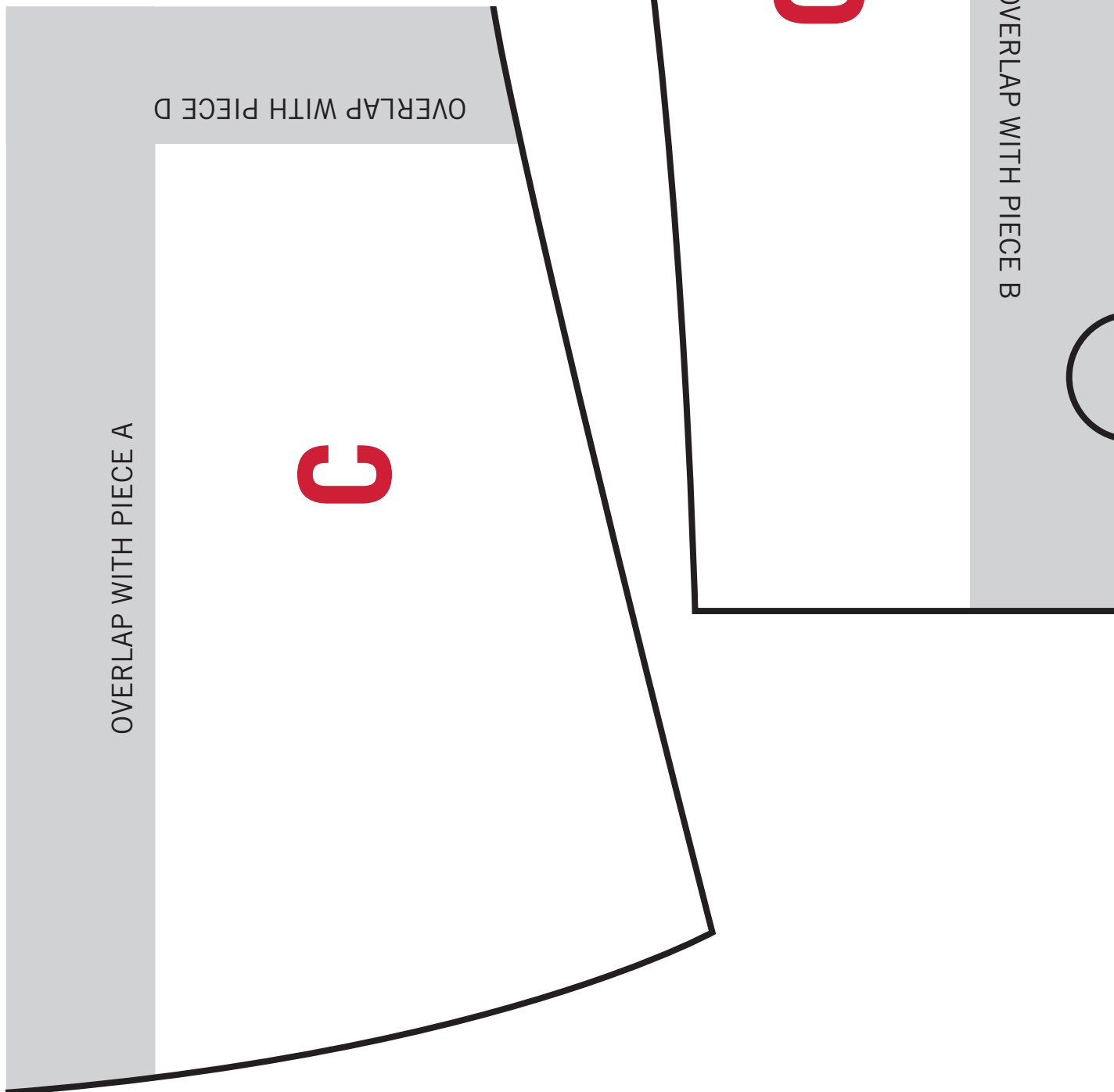
# SHARK PATTERN

## ARM SLEEVE



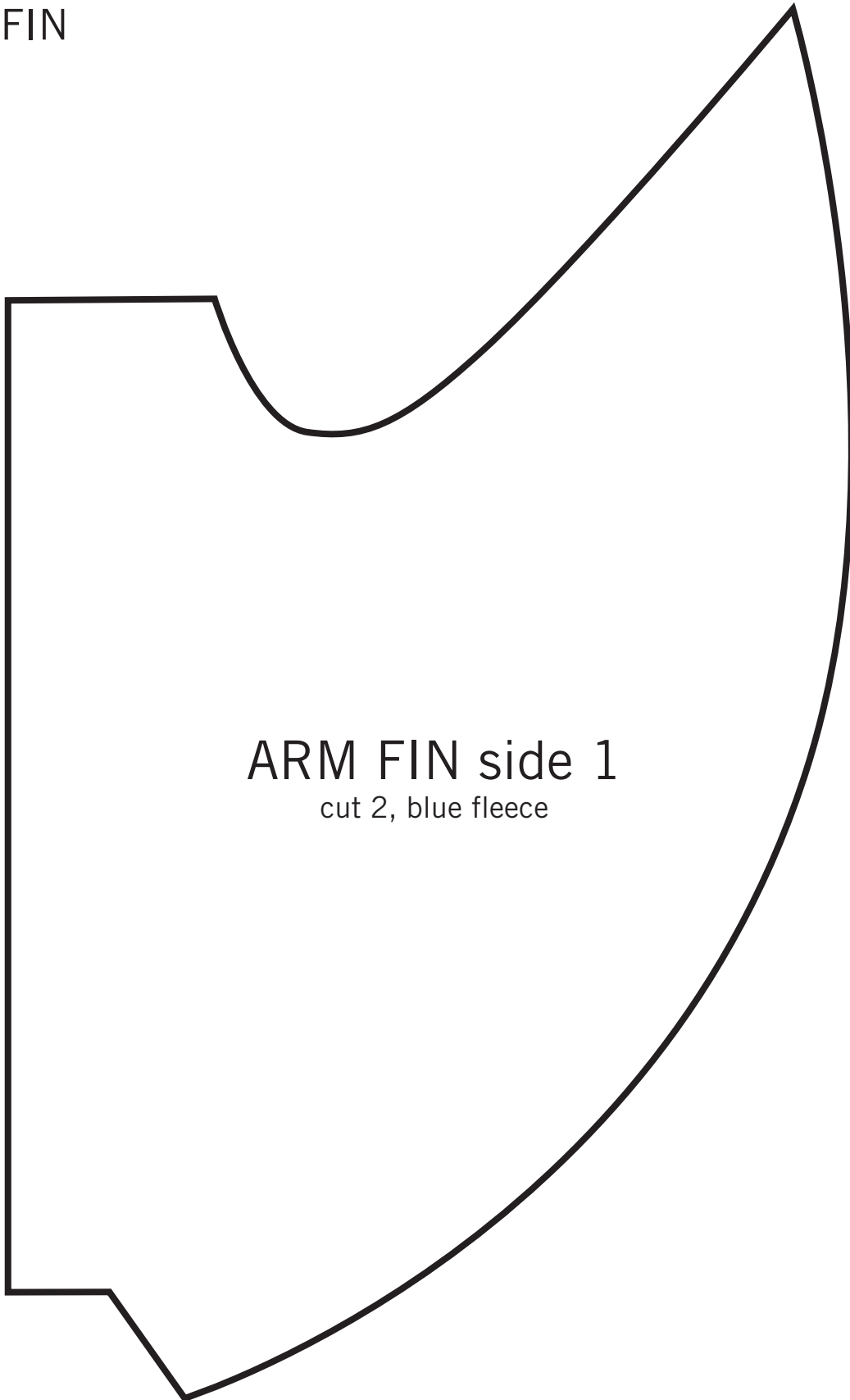
# SHARK PATTERN

## ARM SLEEVE



# SHARK PATTERN

## ARM FIN

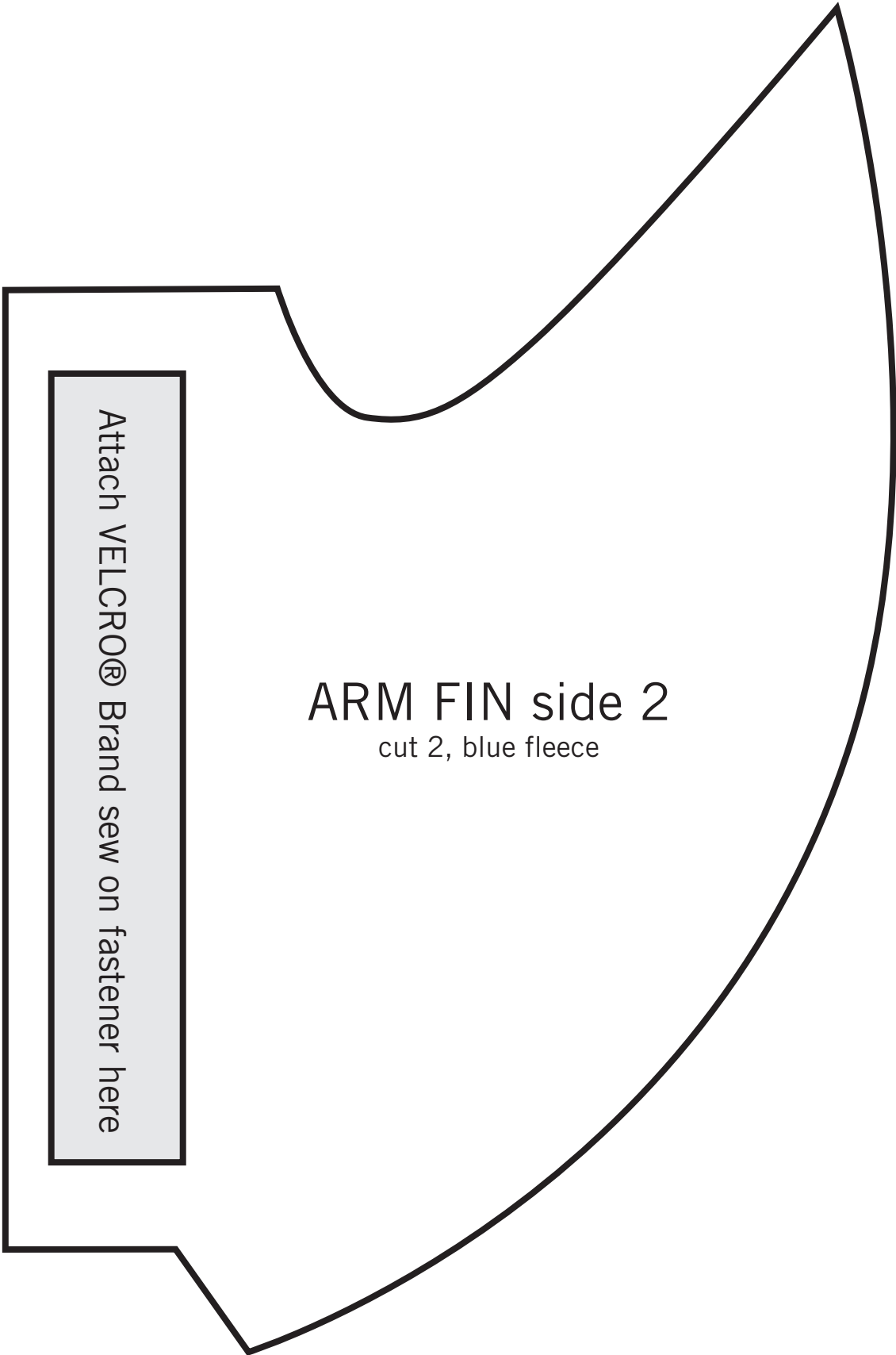


ARM FIN side 1

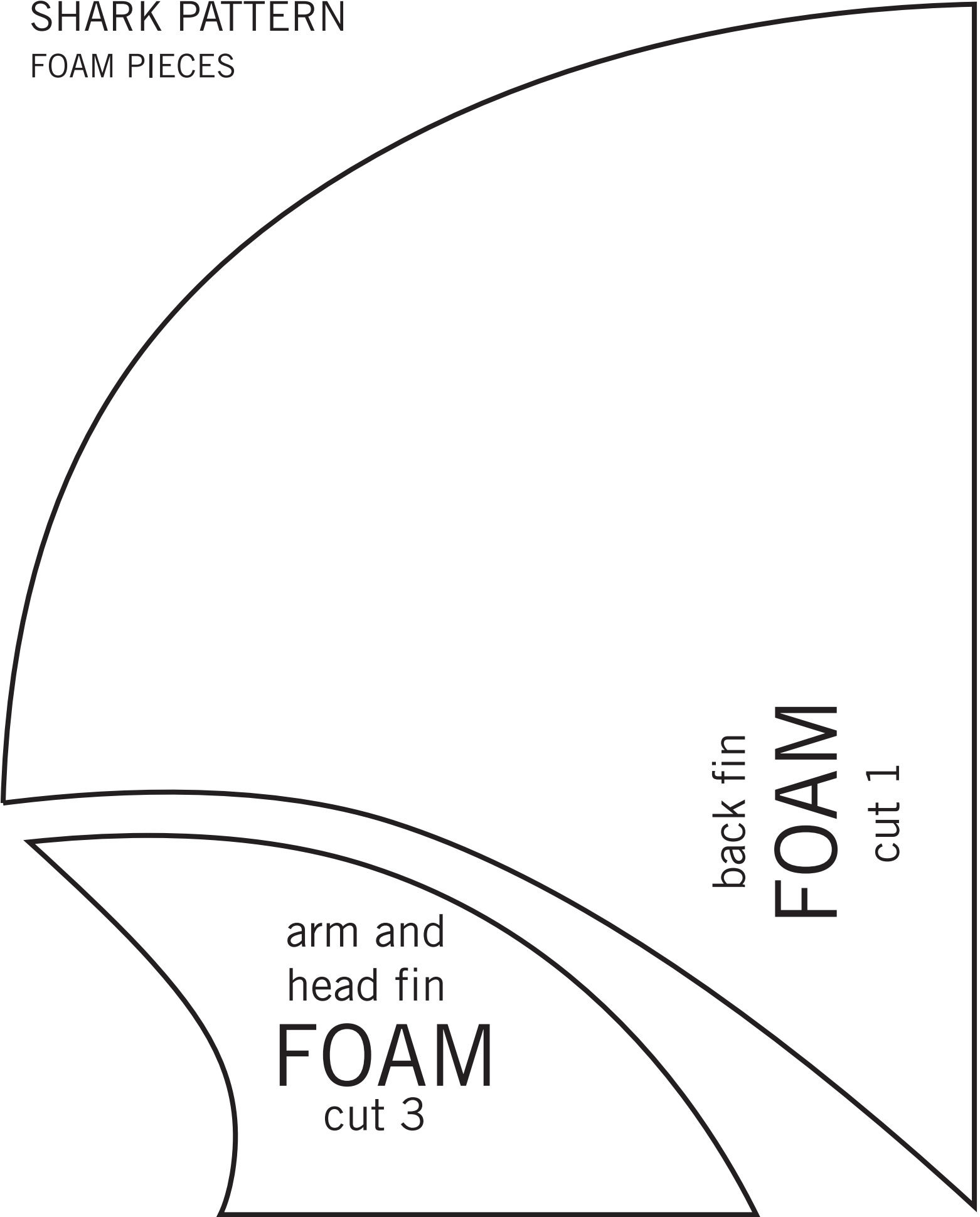
cut 2, blue fleece

# SHARK PATTERN

## ARM FIN



SHARK PATTERN  
FOAM PIECES



back fin

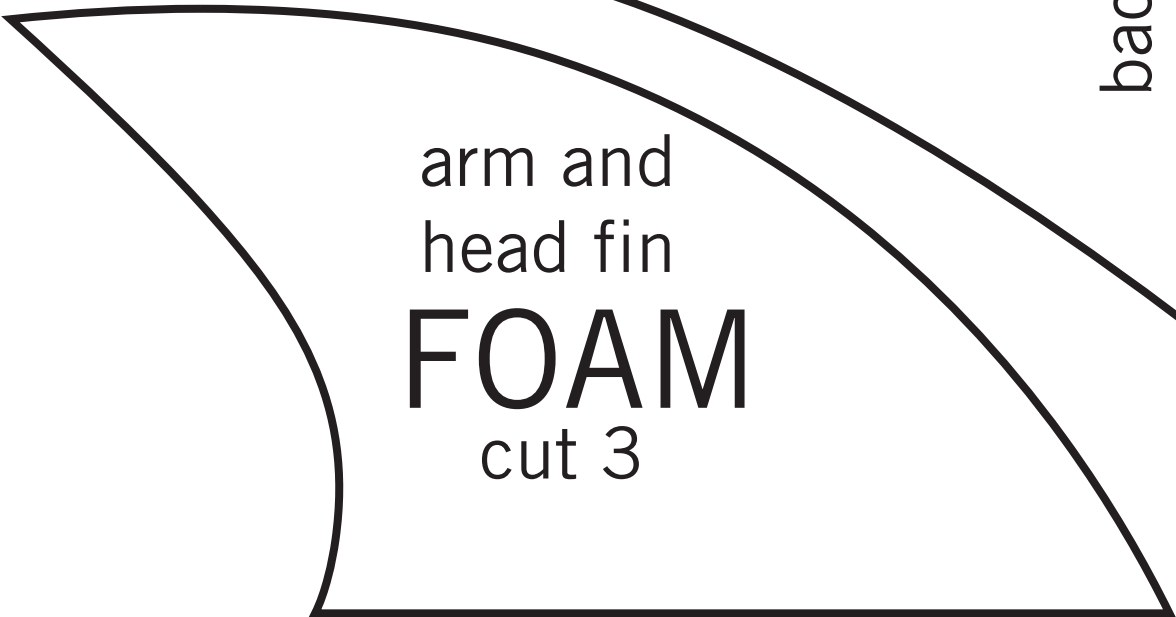
**FOAM**

cut 1

arm and  
head fin

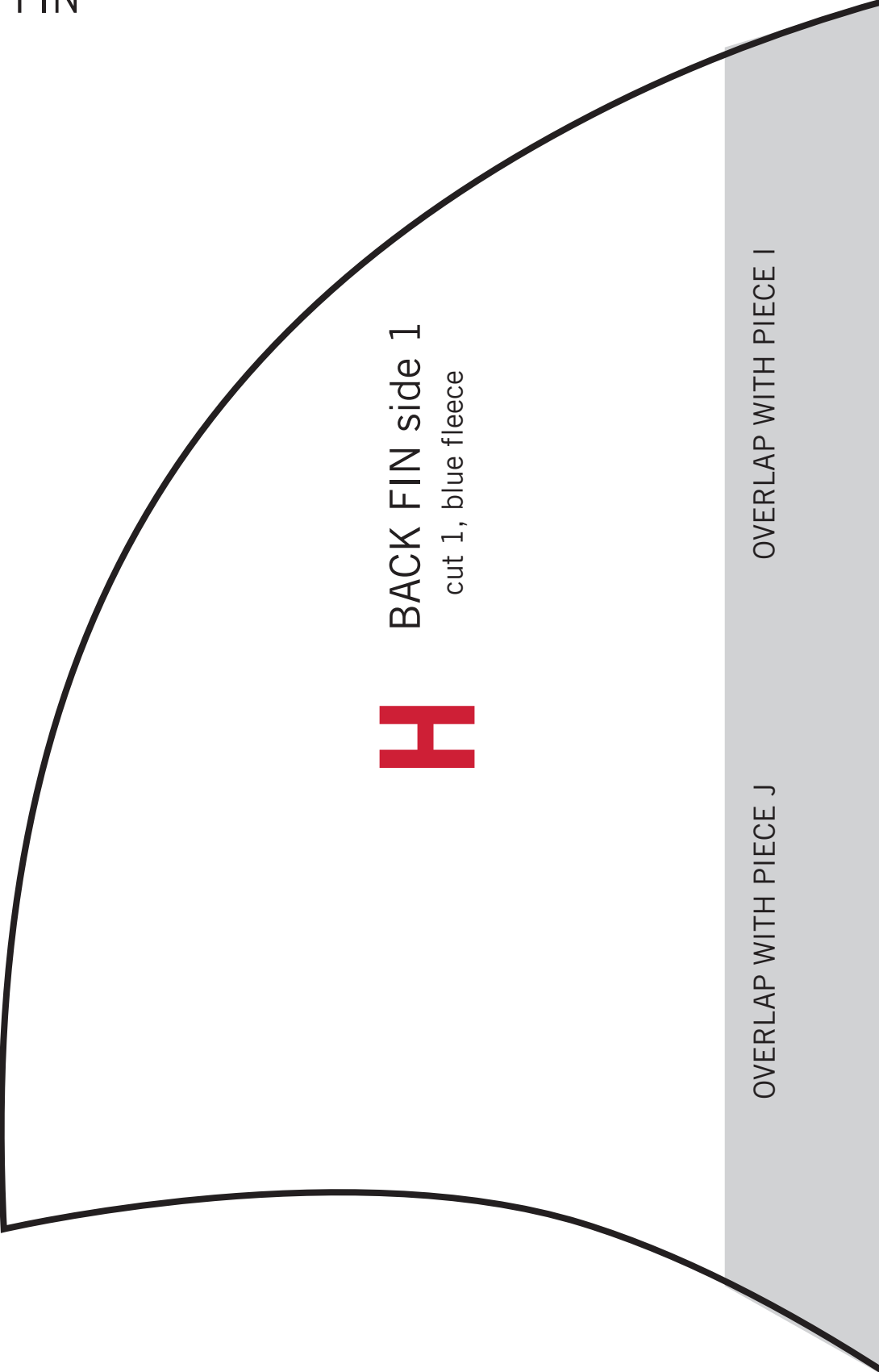
**FOAM**

cut 3



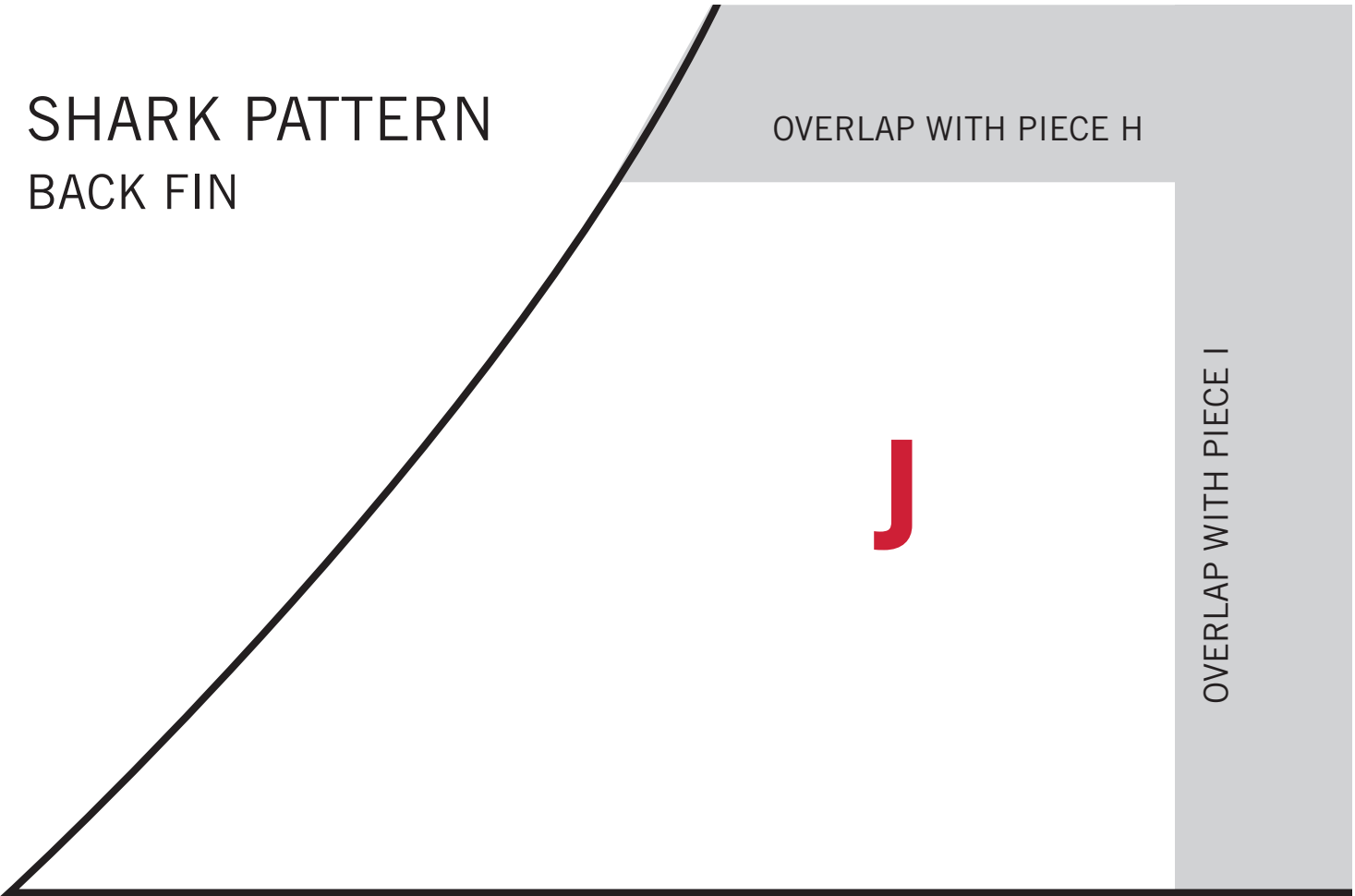
# SHARK PATTERN

## BACK FIN





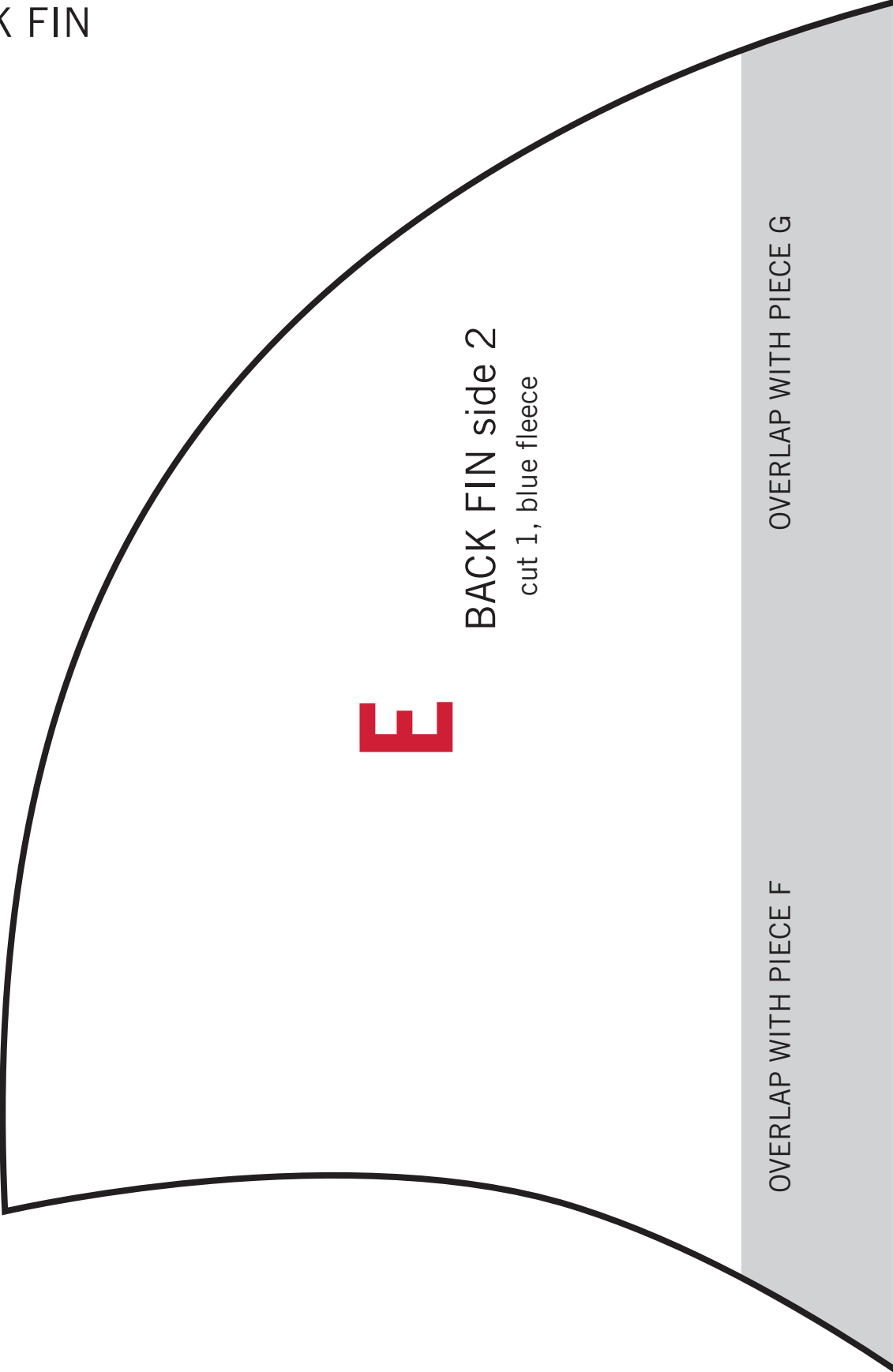
SHARK PATTERN  
BACK FIN





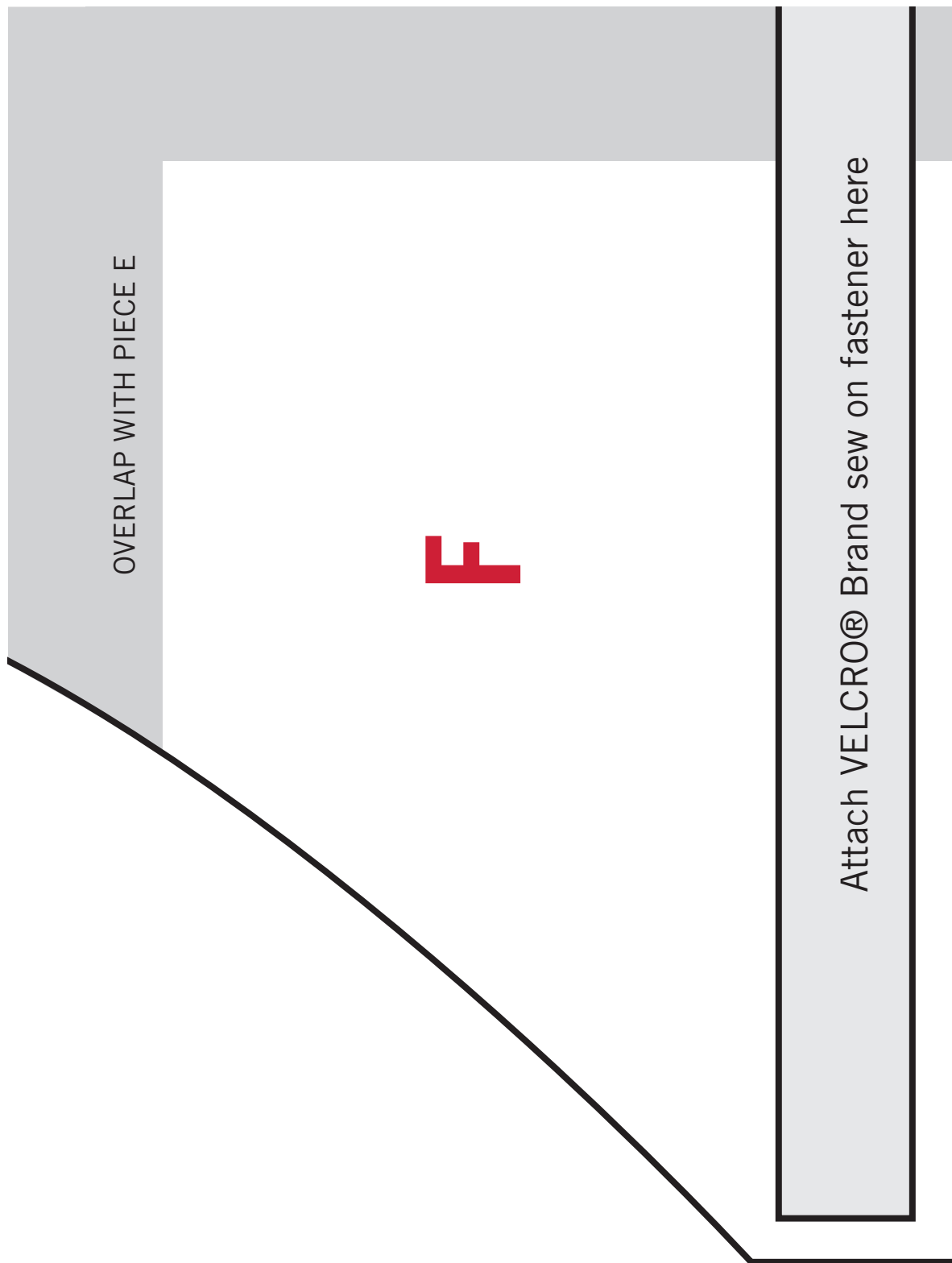
# SHARK PATTERN

## BACK FIN



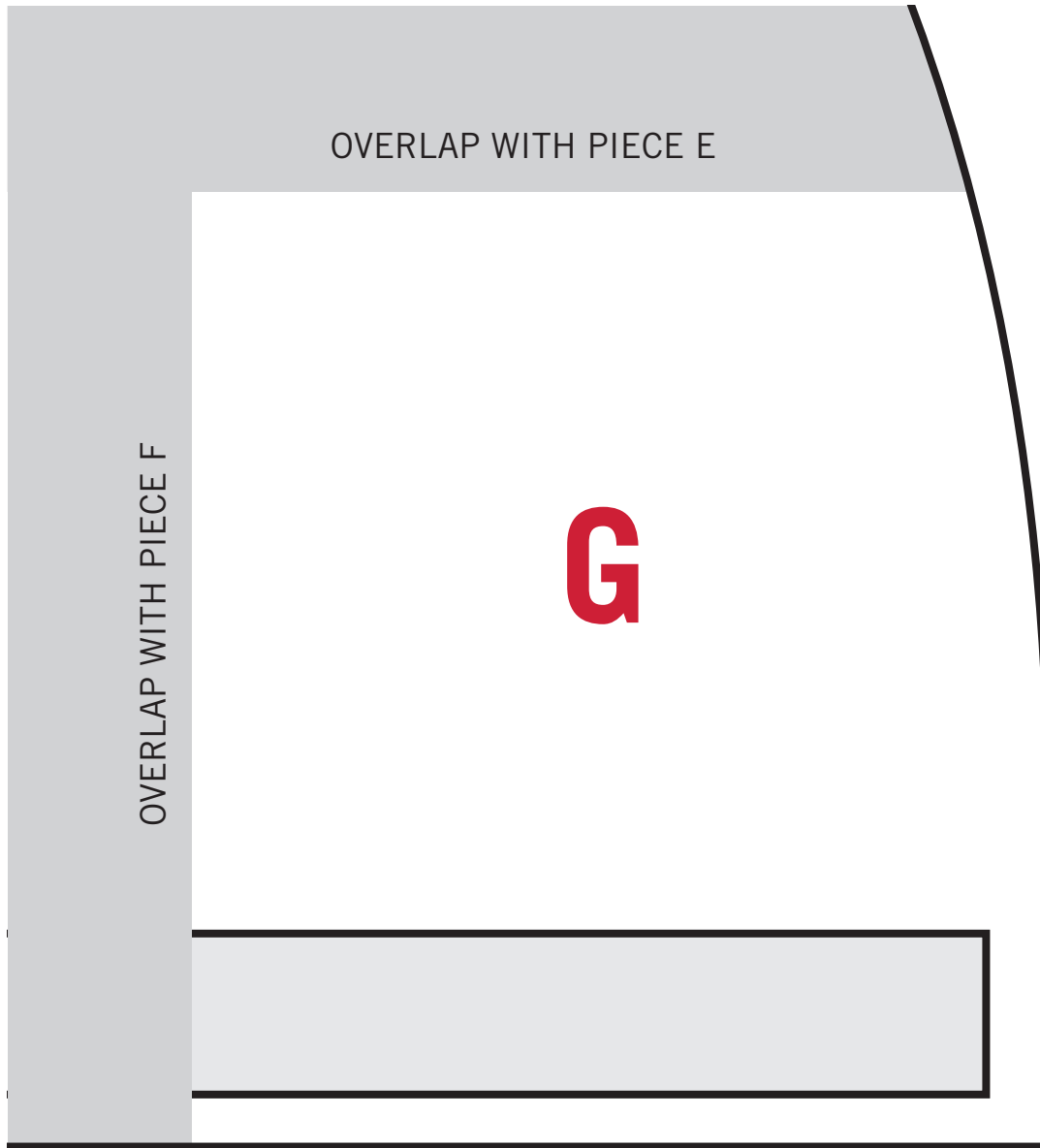
# SHARK PATTERN

## BACK FIN



# SHARK PATTERN

## BACK FIN



# SHARK PATTERN

## SHARK HAT

SHARK HAT front

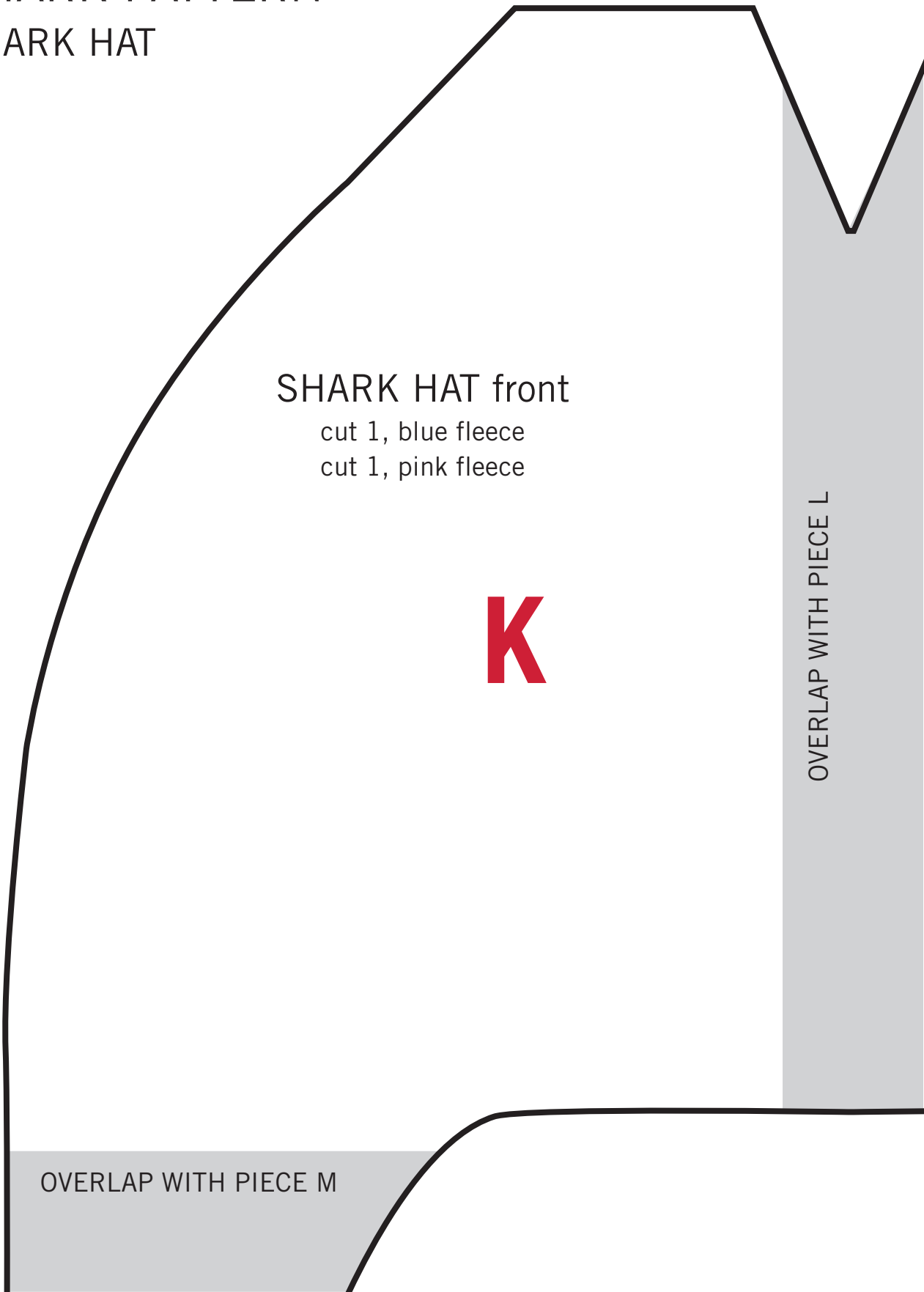
cut 1, blue fleece

cut 1, pink fleece

**K**

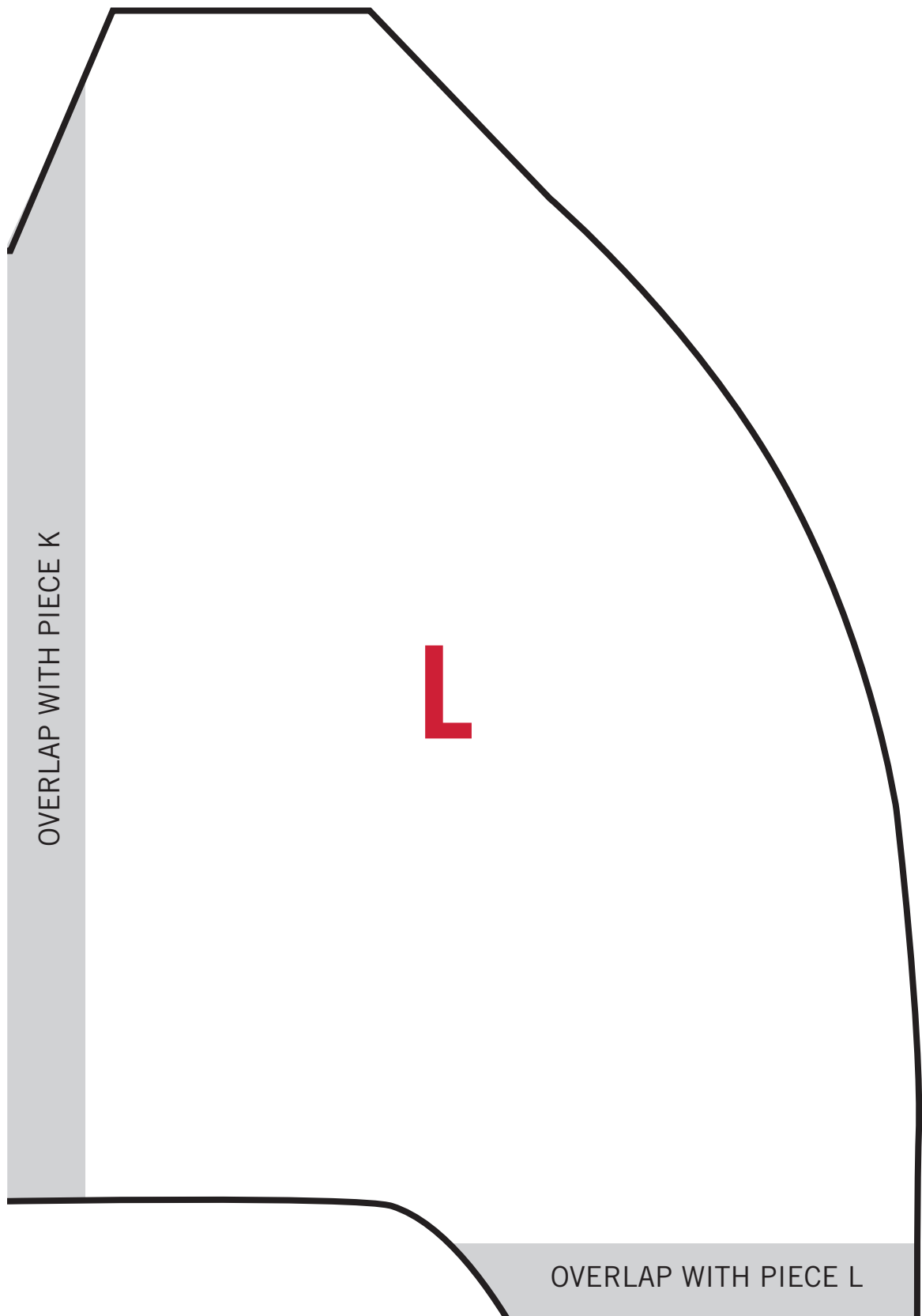
OVERLAP WITH PIECE L

OVERLAP WITH PIECE M



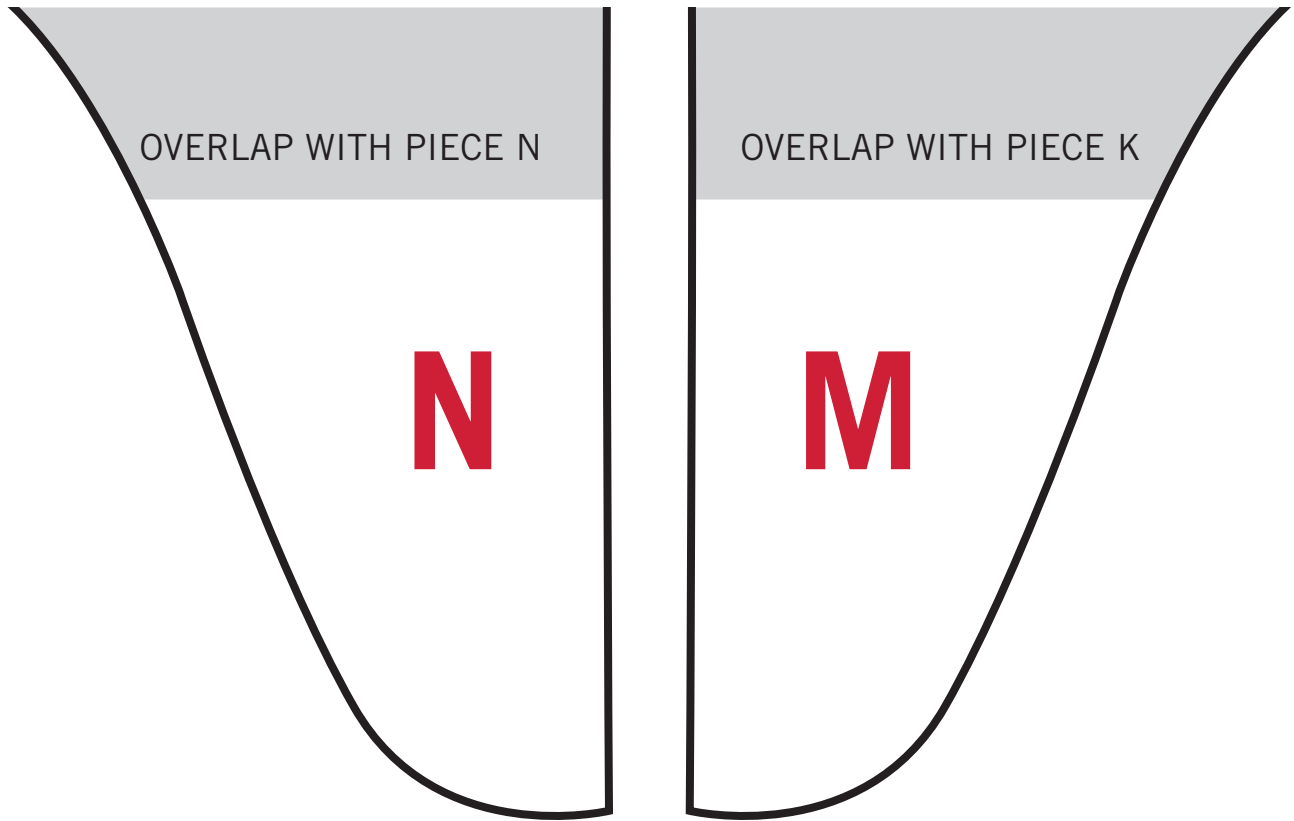
# SHARK PATTERN

## SHARK HAT



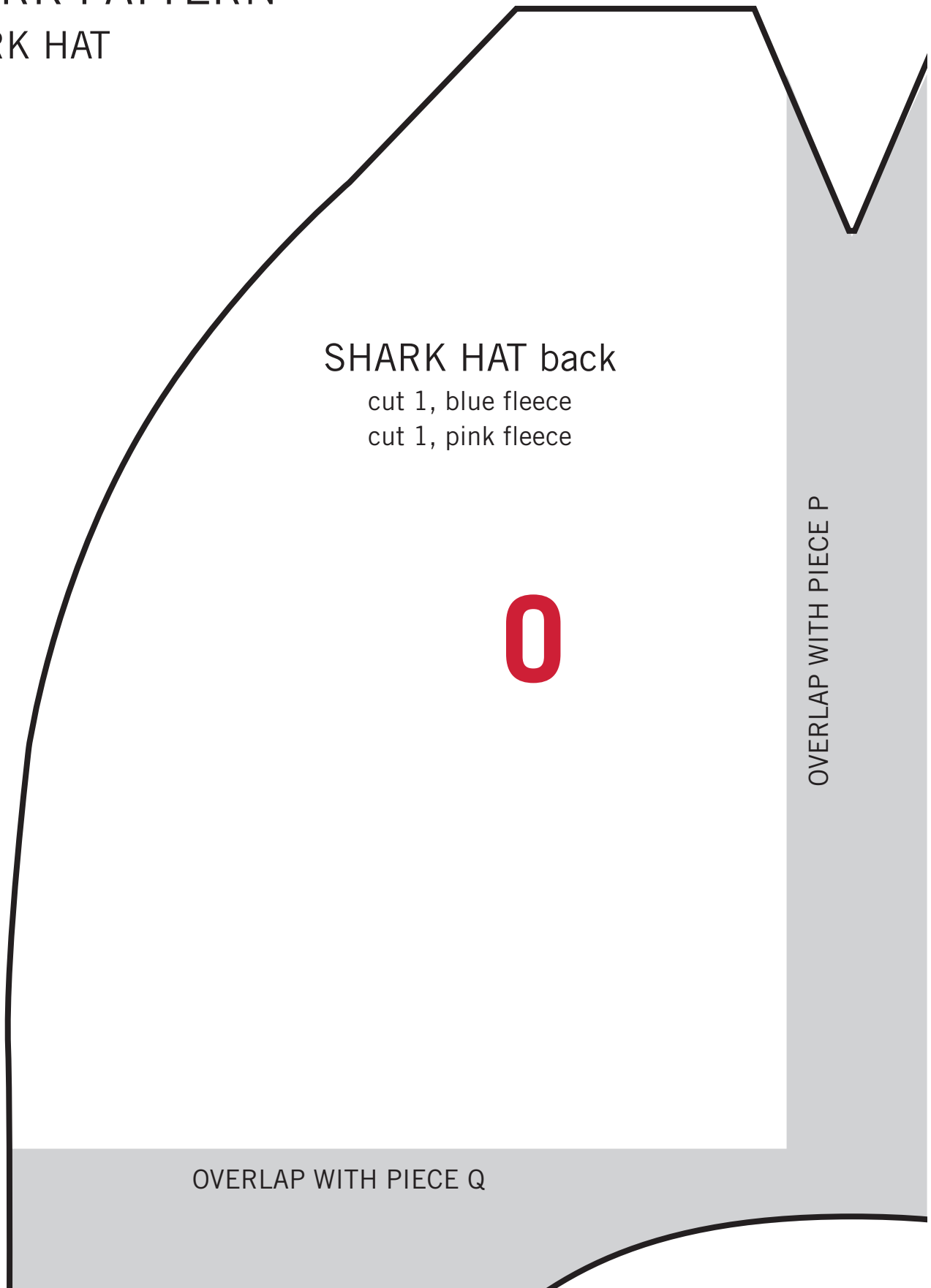
# SHARK PATTERN

## SHARK HAT



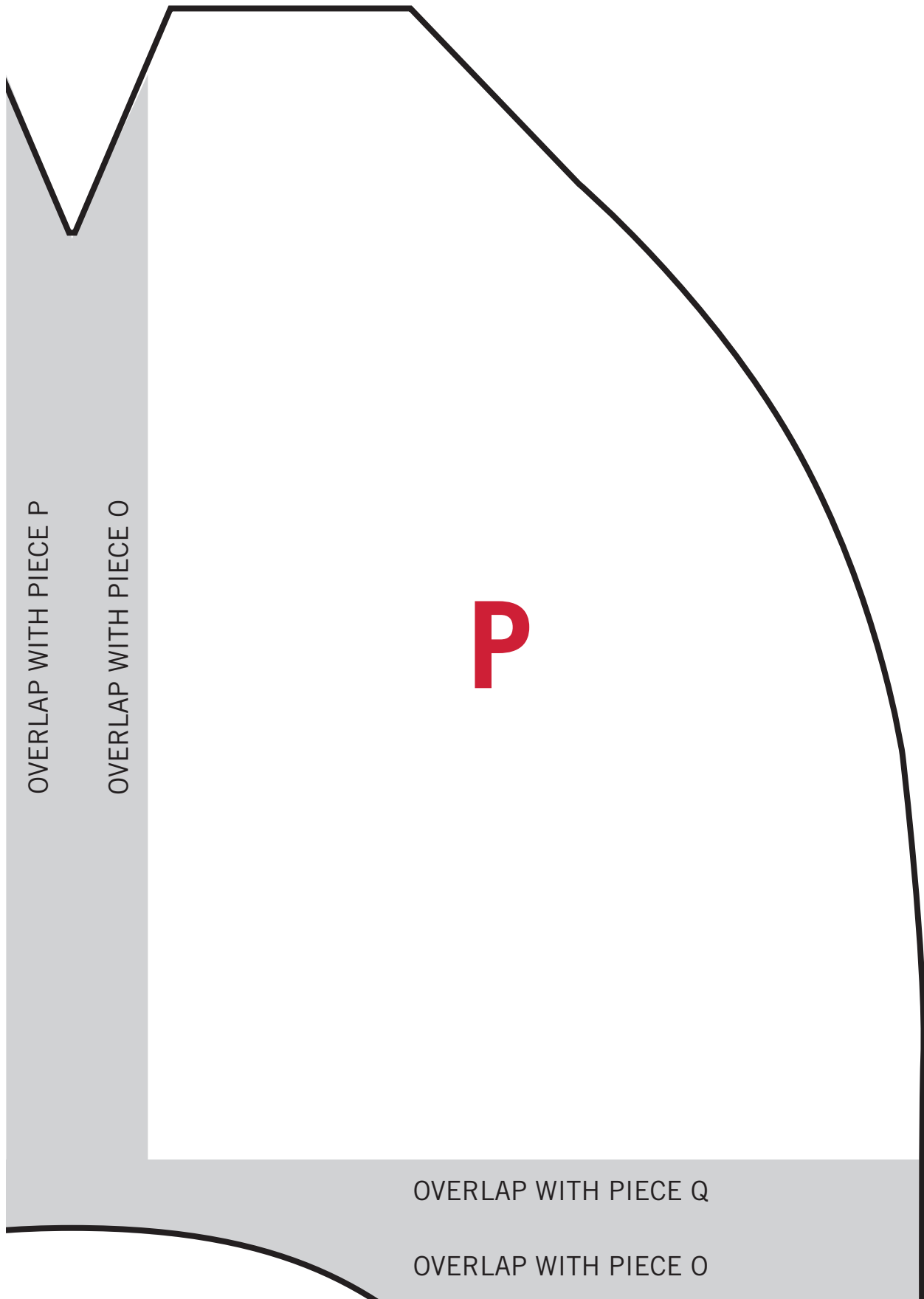
# SHARK PATTERN

## SHARK HAT



# SHARK PATTERN

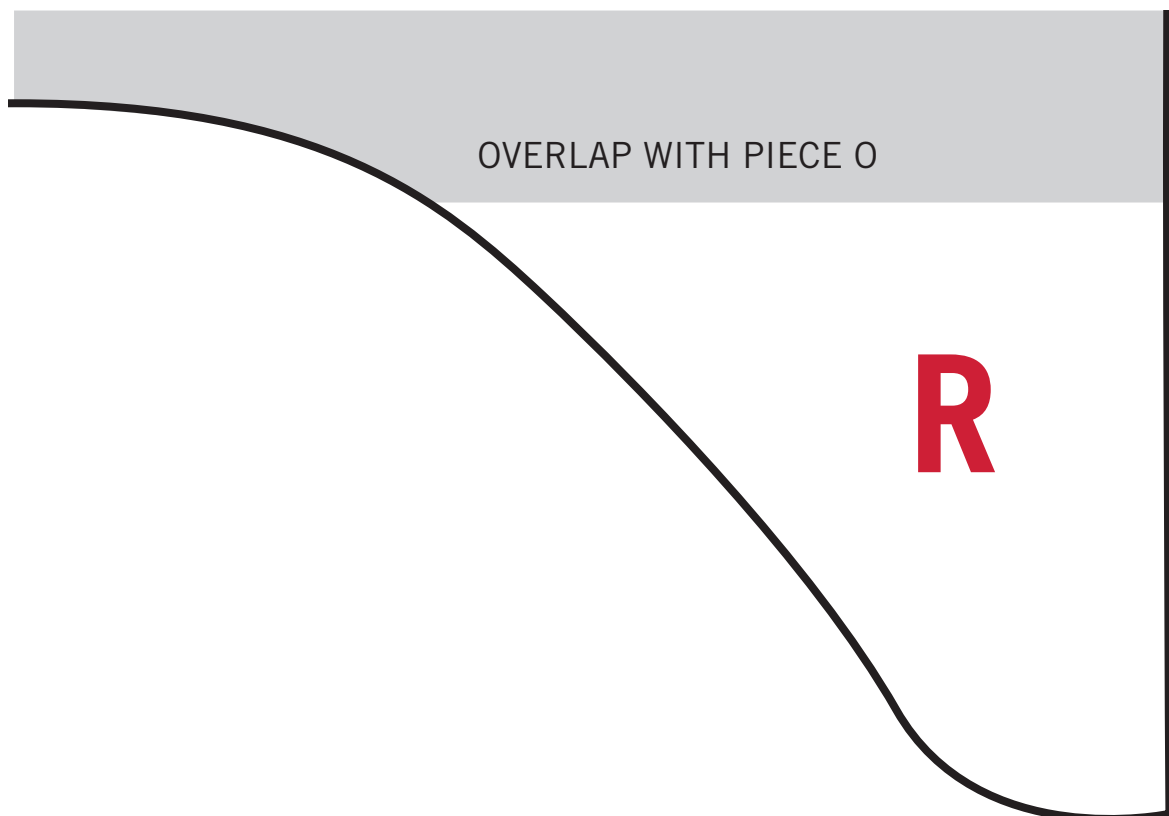
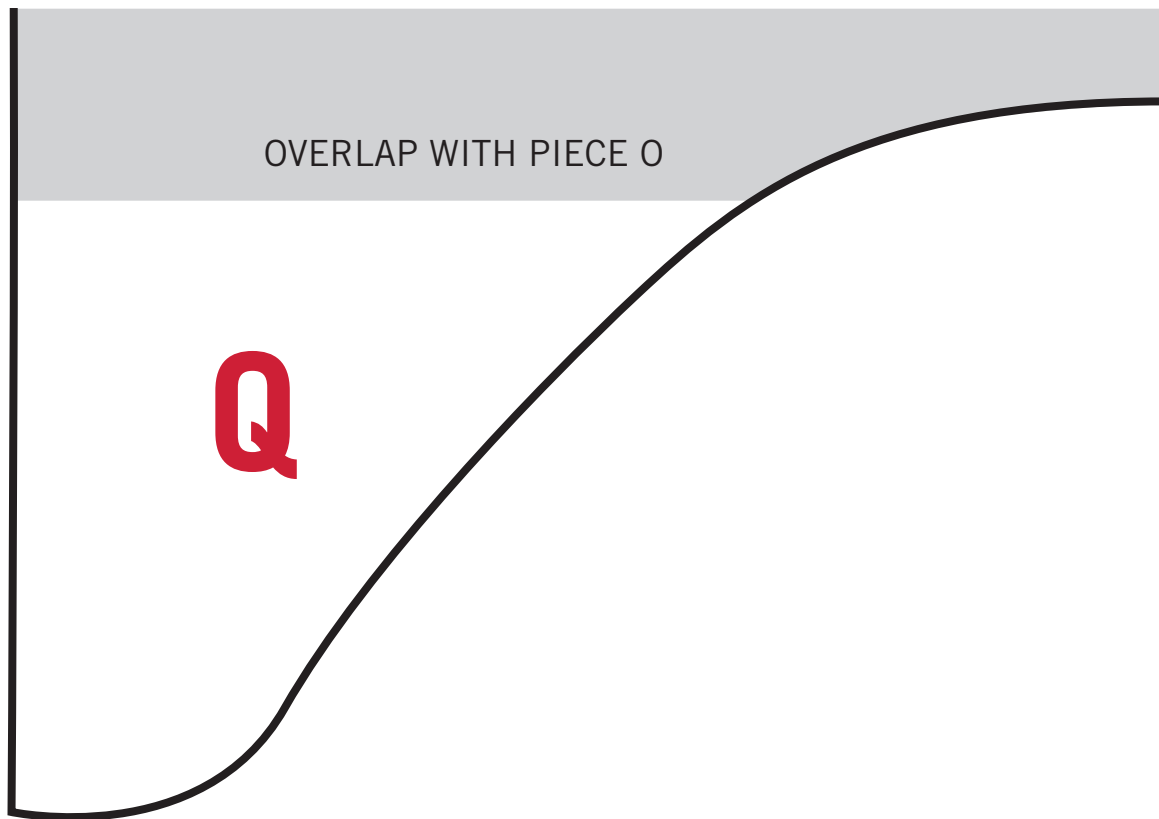
## SHARK HAT





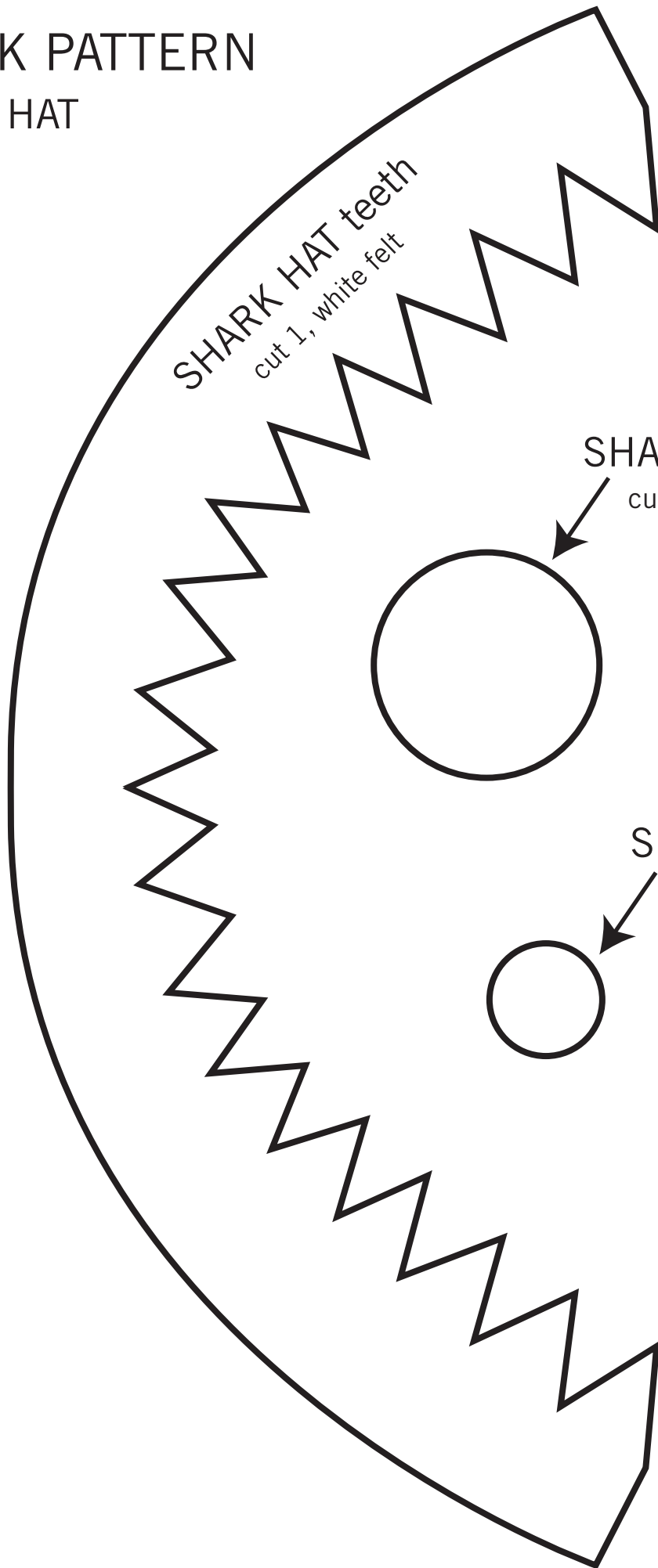
# SHARK PATTERN

## SHARK HAT



# SHARK PATTERN

## SHARK HAT



SHARK HAT teeth  
cut 1, white felt

SHARK HAT eye  
cut 1, white felt

SHARK HAT eye  
cut 1, black felt